



AGE FRIENDLY COMMUNITY PLAN



March 2016

Report



CONTENTS

Message from the President & CEO	1
Key Points of the Plan	2
What is an “Age Friendly Community Plan”?	3
Regional Context	4
Demographic Trends	4
Residential Care	5
Transport	6
Older Persons Housing	6
Community Profile	7
How this Plan was Developed	8
Overview	8
Grant Funding	8
Partnership with Merredin	8
Audit	8
Reference Group	9
Consultation	9
Links to Other Plans and Policies	10
Strategic Community Plan	10
Corporate Business Plan	10
Findings	11
Summary of Audit Findings	11
Summary of Engagement Report	12
The Plan	13
Implementation and Monitoring	16
Annex 1: Age Friendly Community Audit Report	17
Annex 2: Engagement Report:Towards an Age Friendly Community Plan	18

MESSAGE FROM THE PRESIDENT & CEO

It is with great pleasure that we present the Shire of Bruce Rock's *Age Friendly Community Plan*. The Shire of Bruce Rock values the contributions older people make to our community. We have developed this plan to identify priorities for our ageing residents. These improvements will not only benefit older people but the entire community.

The elderly population in the Wheatbelt is projected to increase from 10.4% in 2011 to 17% in 2027. It is critical that we plan for this increase in order to ensure appropriate services are available and to continue to offer a quality of life for older residents living in the Shire of Bruce Rock. We anticipate that the growth of our ageing population will bring with it a number of opportunities and challenges. The responsibility for addressing these needs will be shared amongst all key stakeholders within the Shire. The Shire of Bruce Rock is already working collaboratively with its partners to address the needs of our current and future older residents, and will continue to identify new opportunities for partnerships over the life the Plan.

The Shire of Bruce Rock's *Age Friendly Community Plan* has been developed to outline our commitment to older residents. The Shire has partnered with residents and the broader community to guarantee the Plan is created for, with, and by the Shire of Bruce Rock community. Based on your vital feedback through consultation, we will continually strive to enhance the opportunities to promote active and enjoyable ageing in our Shire.

The Shire of Bruce Rock has a strong community spirit and we have continued to be proud of the high level of community participation and positive feedback throughout the development of this Plan.

On behalf of the Council and the Shire, we would like to strongly commend and recommend this Plan. Collectively, we are confident that the actions it contains will assist local community agencies and groups to work together to support the Shire of Bruce Rock aging population. We certainly look forward to your ongoing feedback as the Plan is implemented.

Cr Stephen Strange

Shire President

Mr Darren Mollenoyux

Chief Executive Officer

KEY POINTS OF THE PLAN

The engagement activities undertaken as part of the development of this Plan found that those who participated enjoy living in the Shire of Bruce Rock. There is a very strong sense of community and participants indicated they valued the lifestyle and community connections in Bruce Rock. They value the services available to them, the quality of outdoor spaces and the opportunities to participate in community life including sport and recreation activities. The critical issues, as identified by the community are:

- Public transport
- Road safety
- Senior housing
- Health services and care, accessibility to a doctor

The Shire of Bruce Rock is committed to developing an Age Friendly Community and this plan identifies a number of actions in response to the findings of the community engagement. The high priority actions identified include:

- Advocating for hospital improvements
- Improving access to shops
- Advocating for a grain truck diversion to enhance road safety
- Advocating for increased aged care housing and residential accommodation
- Increasing youth participation in volunteering to increase volunteer diversity and aid succession planning
- Promotion of events and volunteering opportunities to new residents
- Improved access to information for residents and tourists.

This plan sits under the Shire of Bruce Rock Strategic Community Plan, and the Corporate Business Plan. It is not intended to directly reallocate resources. However, it will be used as an informing strategy, providing direction and a framework for assessing expenditure proposals in future strategic and corporate planning by the Shire of Bruce Rock.

A range of key indicators will be used to monitor the success of the Plan.

WHAT IS AN “AGE FRIENDLY COMMUNITY PLAN”?

Age Friendly Communities are those that encourage “active ageing by optimising opportunities for health, participation and security in order to enhance the quality of life as people age” (World Health Organisation)¹. An Age Friendly Community is one which:

- Recognises the great diversity among older people;
- Promotes their inclusion and contribution in all areas of community life;
- Respects their decisions and lifestyle choices; and
- Anticipates and responds to ageing-related needs and preferences.

A community that exhibits these qualities is not only an Age Friendly Community, it also tends to better cater for the whole population, where a wider range of abilities and needs are met.

The Shire of Bruce Rock considers Age Friendly Community planning vital to undertake for the following reasons:

- By 2027, Wheatbelt population over 70 will have increased by 75.3%
- The proportion of people 70+ will have increased from 10.4% in 2011 to 17% in 2027²

In addition to this, older adults generally prefer to remain in their own home and continue to be part of their community. Older adults feel safe, valued and respected in their own community and local governments have a key role in ensuring this can occur.

The Age Friendly Community Plan has been developed and structured using the Wheatbelt Development Commissions Age Friendly Community Planning Guide (based on the World Health Organisation Guide to Age-Friendly Cities and Communities). The WHO eight domains of an Age Friendly Community have been configured to reflect Wheatbelt perspectives: health and community services; outdoor spaces and buildings; transport and movement; housing; sport and recreation; social participation; respect and social inclusion; and communication and information.

An Age Friendly Community Plan identifies the priorities and actions discovered in the resulting process. It identifies the age friendly barriers and areas for improvements that have been recognised by the community and Council. An Age Friendly Community Plan is an Informing Strategy under the Integrated Planning and Reporting (IPR) Framework and needs to be resourced and prioritised in the Shire’s ongoing corporate planning process.

¹ Note that the Western Australia State Government has adopted the World Health Organisation’s model (see <http://www.communities.wa.gov.au/communities-in-focus/seniors/Pages/Age-Friendly-WA-.aspx>).

² Verso Consulting 2013, Wheatbelt Integrated Aged Care Plan.

REGIONAL CONTEXT

This section on the Central East Aged Care Alliance (CEACA) sub-region has been extracted from the Wheatbelt Aged Support and Care Solutions (WASCS) Report³, with a focus on the following sub-sections.

Demographic Trends

The Eastern Wheatbelt CEACA sub-region (a combination of the WEROC and NEWROC sub-regions) is the largest in area and the number of shires. The 70+ population will increase from 1,019 (10.3% of total area population) in 2011, to 1,196 (11.5%) by 2017, and to 1,616 (15.9%) by 2027. The Accessibility/Remoteness Index of Australia (ARIA) scores localities within the CEACA area which indicate Moderate Accessibility and Remote areas, indicating “significantly” to “very” restricted access as defined by the ARIA. All local government areas will qualify for the viability supplement. In 2011 there were 105 Aboriginal and Torres Strait Islander persons aged 45+ recorded in the CEACA local government areas, representing 13.4% of this cohort in Wheatbelt as whole.

The data indicates that there are six unpaid carers aged 85+ living in the CEACA sub-region, although there were a reported 67 aged 70+. The need for dementia specific care for older residents of the CEACA sub-region is likely to increase over the projected period from an estimated 90 persons aged 70+ in 2006 to 156 persons by 2027. This represents an increase of 66 people (a 73.3% increase).

All CEACA local government areas are relatively disadvantaged (i.e. Socio-Economic Indexes for Areas [SEIFA] score less than 1000) the most disadvantaged is Kellerberrin (ranked 134 of 142 in WA).

CEACA Aged Care Support and Solutions Summary				
Age Friendly Communities	Home Support and Care			Residential Care
	HACC	Home Care	Respite Care	
All shires to start/progress action in line with WA Seniors Planning Framework (SPF)	Ensure multi-purpose service (MPS) HACC delivered according to benchmark levels/standards	Monitor extent of coverage & raise community awareness as alternative to residential care	Coordinate and plan for wider availability of in home respite and better public awareness	WA Country Heath Service (WACHS) to consider how to provide suitable care in very dispersed MPS sites.

³ <http://www.wheatbelt.wa.gov.au/our-projects/aged-care/>

Current CEACA Service Levels and Provider Summary				
HACC	Home Care	Residential Care	Respite Care	Providers
Patchy	Patchy but improving	Formally adequate but many unsuitable facilities	Some residential respite but shortage of in-home plus low awareness	Mainly WACHS plus not for profit (NFP) residential (Dryandra Lodge) and NFP home care ex Merredin

CEACA (excl. Narembeen) Residential beds summary and growth estimate		
Currently available	2011 planning ratio target	2027 planning ratio target
71	76	112

Residential Care

The CEACA sub-region is distinguished as one of the few sub-regions heavily dependent on WACHS for Residential Care. Apart from Dryandra Lodge at Kellerberrin, all Residential Care is provided by WACHS via multiple sites of the Eastern Wheatbelt MPS based at Merredin and the Bruce Rock Memorial Hospital/MPS. Until recently the sub-region has also depended on the MPS facilities to provide Home Care. However, a non-profit provider has recently established at Merredin and there is also some evidence of providers from outside the sub-region providing Home Care services. The issues for the CEACA sub-region is its small and dispersed population, the unviable scale of facilities (their fabric, economics and skills maintenance) and the logistical challenges in providing HACC and Home Care to more isolated places. There is no evidence of a major formal shortage in Residential Care but many of the small MPS facilities are not built for purpose and would not meet Commonwealth standards. The built form and staffing profile does not allow the implementation of properly developed aged care programs. As a result, there is a major issue with older people having to move far away to obtain the required care. There is a projected demand for a small number of additional beds in the next 15 years, taking into account the 21 additional beds awarded to Dryandra Lodge, but not on a scale ever likely to encourage private/non-profit providers. The challenge for the CEACA sub-region is to establish capacity for high standard aged care facilities at selected locations to enable those older people who need Residential Care to receive it at the proper standard and as near to home as possible.

Transport

Significant transport issues across the sub-region include:

- Over reliance on voluntary ambulance services
- Disengagement from services if transport is not available
- Limited public transport
- Overnight stays are often necessary if travelling to Perth
- Underutilised Shire buses.

Older Persons Housing

Identified need to deliver housing options under a range of ownership options that can assist older people to down size or to move to more appropriate housing that facilitates the maintenance of independence.

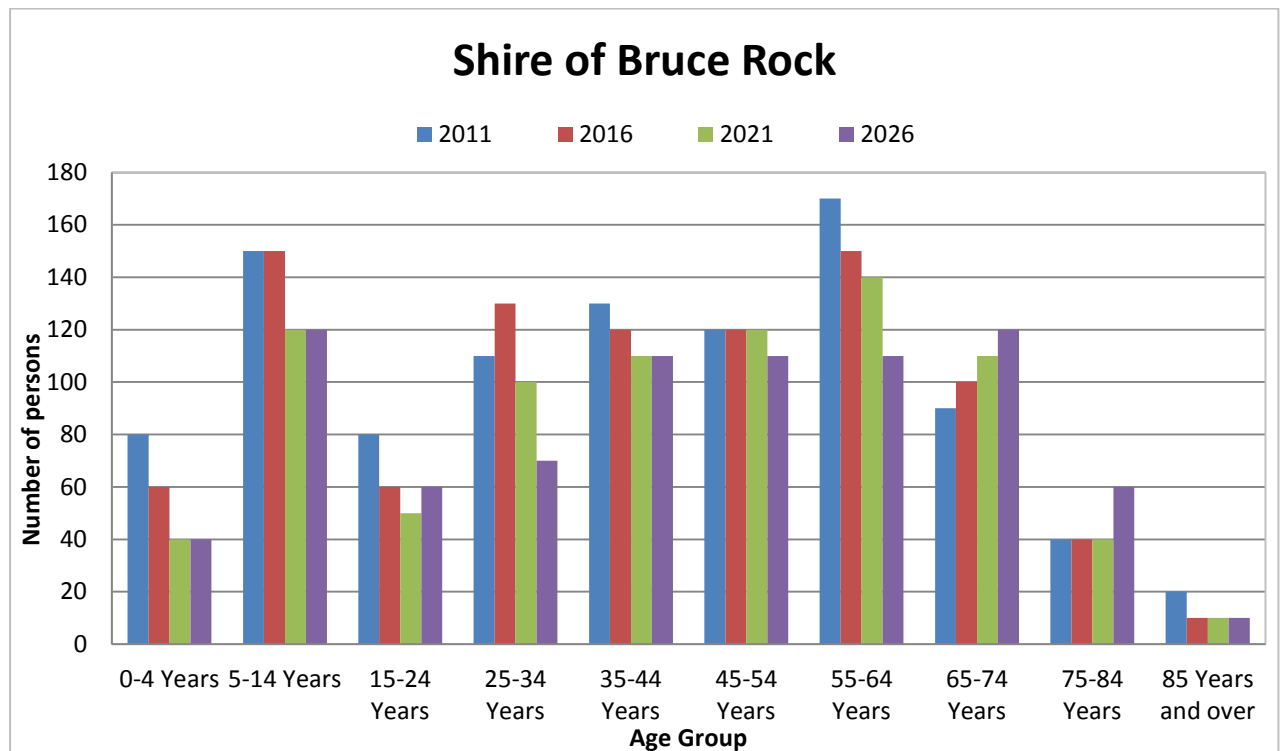
There is acknowledgement that additional affordable older persons housing is required, particularly in the WEROC local government areas.

COMMUNITY PROFILE

The Shire of Bruce Rock covers an area of 2,727 square kilometres and includes the towns and localities of Bruce Rock, Ardath, Babakin, Belka, Erikin, Kwolyin, Shackleton and Yarding. It is located 245 kilometres east of Perth with a population of approximately 1200.

Figure 1, below, is indicative of the Shire's projected age profiles from 2011 to 2026. The graph illustrates a noticeable increase in the age cohorts from 65 to 84 years of age and older. The largest difference is expected to occur in the cohort of 65 to 74 years of age. The number of persons in 2011 was recorded as 90 and this number is expected to rise to 120 in 2026. This accounts for a 33% increase in the amount of persons in this cohort. The amount of 75 to 84 year olds was 40 in 2011 and is projected to increase to 60 in 2026, or a 50% increase in population size. This aging population will place a significant amount of pressure on existing services in the Shire of Bruce Rock unless they are accounted for.

Figure 1: Projected age profiles for the Shire of Bruce Rock from 2011 to 2026⁴



⁴ <http://www.planning.wa.gov.au/publications/6196.asp>

HOW THIS PLAN WAS DEVELOPED

Overview

The planning model used in this Plan consists of a four step solution-focused process. It has ultimately produced an Informing Strategy consistent with and complementary to the Shire of Bruce Rock's Strategic Community Plan. The first step is to gain an understanding of each unique local community. A collaborative process involving service providers and seniors themselves is then used to develop a three to five-year plan. Each stage naturally progressed into the next, with the first three steps providing the essential information for understanding the current and longer term needs and preferences, as the basis for strategic planning and action.

Grant Funding

The Shire of Bruce Rock applied for 2014 – 2015 Age-Friendly Communities Regional Local Government Strategic Planning Grants Program. This program, run by the Department of Local Government and Communities, seeks to “optimise opportunities for health, participation, and security by establishing policies, services and structures that improve the quality of life of community members as they age.” The grant funding itself is to assist local governments in regional Western Australia to collect and analyse given findings in respect of the Age-Friendly Communities Framework. Funding was awarded at up to a rate of \$10,000 per project.

Partnership with Merredin

In order to reap the most benefit from the Age-Friendly Communities grants, Shires were encouraged to team up with another, similarly geographically located Shire in order to ensure funding of both projects. As the Shires of Merredin and Bruce Rock are part of the Central East Aged Care Alliance, they agreed to collaborate on completing their Age Friendly Community Plans, in order to take advantage of the regional perspective and economies of scale.

The two Shires decided to follow the Wheatbelt Development Commission's Age Friendly Community Planning Guide. They have a strong shared commitment to becoming Age Friendly Communities and a common view of how the planning will benefit their communities, the approach, project outcomes and how the objectives will be met.

Audit

The Shire of Bruce Rock undertook an Age Friendly Community Planning Audit in February 2015 and then again in November 2015. This audit was designed to capture information for the purposes of identifying whether the community is an Age Friendly Community across eight “domains” that are particularly relevant to the wellbeing of seniors. Each domain contains a number of components, sometimes divided into sub-domains. This information enables the Shire and the community to assess where improvements are needed and assist in informing the wider Age Friendly Community planning that will guide future activities and investments. The Report was prepared using the Wheatbelt Development Commission's Age Friendly Community Planning Audit Tool.

Reference Group

As part of the conditions of fulfilment for the grant, the Shire of Bruce Rock established a reference group that guided and supported the project and reviewed the draft reports.

Consultation

The Shire conducted focus groups and a survey in order to consult with community members. The Shire of Bruce Rock's focus groups were aimed at seniors, carers and service providers. They were structured around the eight WHO AFC domains with participants involved in assessing these features in their own communities. A survey was developed and posed a standard set of questions structured around the eight WHO domains. It was promoted to persons within the Shire of Bruce Rock in both electronic and hardcopy forms.

In addition to this, the Council was consulted through an Issues and Options Workshop. They were given the results of the community engagement and prioritised various community member concerns that were then used to inform the creation of this Plan.

LINKS TO OTHER PLANS AND POLICIES

Strategic Community Plan

The Shire of Bruce Rock Strategic Community Plan (2013) describes the community priorities for the ten year period from 2013 - 2023 and the key activities the Shire will focus on to achieve the community aspirations. The Strategic Community Plan presents four goals including "Social" with a priority action to "participate in local and regional aged care accommodation options, selecting best practice for the Shire, coupled with appropriate and complementary health, recreation and community services e.g. Senior Citizens Centre, aged care, Men's Shed".

Corporate Business Plan

The Shire of Bruce Rock Corporate Business Plan (2013) translates the community aspirations outlined in the Strategic Community Plan into an implementable work program. The Corporate Business Plan identifies several aspects related to ensuring an age friendly community with a particular short term focus on housing and service provision.

Disability Access and Inclusion Plan (DAIP) 2012 - 2017

The Disability Access and Inclusion Plan (DAIP) is required under The Disability Services Act 1993 with the aim of planning and implementing improvements across seven outcome areas. These plans benefit people with disability, older people, young parents and people from culturally and linguistically diverse backgrounds. The Shire of Bruce Rock DAIP identifies a range of access improvement opportunities that will have a particular benefit to older people in the community. Some of these actions are very closely related or a duplicate of the priority actions identified within this Plan. This correlation reinforces the importance of this Plan and the broader community outcomes beyond older people.

FINDINGS

Summary of Audit Findings

Contained below is a summary of the extensive findings compiled in an Audit report. **The complete Audit can be found in Annex 1.**

Health and community services

- There is a GP and a Hospital in the town of Bruce Rock.
- A dental service is also available in the Shire along with allied health services.
- There is a pharmacy and shopping complex located on the Main Street of Bruce Rock. Most shops lack disability access and disability parking is available at either end of the Main Street.
- Health and Community Care Services are available although a lack of volunteer drivers limits access to transport services.

Outdoor spaces

- There were three parks and open spaces surveyed within the Shire for the audit. Full details of these specific places can be found in the report. For the most part the parks in the Shire have good disability access and features including shade, benches and lighting.

Public buildings

- Public buildings surveyed in the audit are comprised of the Shire Hall, Administration Building, Senior Citizens Centre, Amphitheatre, Aquatic Centre, Recreation Centre, Gym, Museums and Medical Centre. The front counter and reception desks of some buildings were often higher than the suggested maximum.
- Disability access is available in a majority of the public buildings surveyed.

Transport and movement

- Pedestrian crossings are generally adequately provided for and are available on key access routes with one exception at the District High School.
- There are some gaps in the footpath network that the Council has been addressing for some time. Lighting and adequate seating along major routes are also lacking in the Shire of Bruce Rock.
- Traffic signs are generally well placed and visible.
- Public transport is not available within the Shire but community transport (HACC) is available.

Housing

- There is not sufficient suitable housing to meet the needs of the ageing population in the future.

Summary of Engagement Report

It is clear from the results of the engagement activities that both survey respondents and focus group participants enjoy living in the Shire of Bruce Rock. However, the research also shows that the community feel that there are some opportunities for improvement regarding the provision of key services in order to create an Age Friendly Community. The full Engagement Report can be found in Annex 2.

The key findings are:

- A total of 17 individuals participated in the focus group and 34 individuals participated in the surveys.
- Of those seniors who participated, 82% of survey respondents and 65% of focus group participants are retired.
- The majority of both survey and focus group respondents believe that improved provision of health and community services and attention to road safety will lead to a more fulfilling experience for seniors in the Shire of Bruce Rock.
- Focus group participants believe the most important issues for aged persons in the Shire of Bruce Rock are:
 - Public transport
 - Safety of all who access roads
 - Increased access to medical specialists
 - Increased number of volunteers
 - Gopher users more aware of speed limits
 - Road maintenance
 - Senior housing
- Survey respondents believe the most important issues for aged persons in the Shire of Bruce Rock are:
 - Health services and care, accessibility to a doctor
 - Accommodation for the very elderly
 - Transport to Perth
 - Road safety due to increased rate of trucks on the road

THE PLAN

The Plan is based on the eight domains of an age friendly community (two of which have been combined based on community feedback), each with a number of associated actions as listed in the following table. These are designed to allow Council to respond to changing needs and ensure support for the wellbeing of the Shire of Bruce Rock ageing population. Many of the actions outlined are able to be implemented within existing resources however any new or expanded activity will be considered through the Shires standard corporate planning processes.

Health and Community Services				
Objective	Actions	Priority	Within existing resources?	Others involved
Ensure older people have access to quality and reliable health and community services allowing them to age in place and keep travel at a minimum.	Advocate for hospital upgrades and improvements.	High	Yes	Department of Health WA Country Health Service Local Member of Parliament
	Continue to work with local GP services to expand the availability of doctors.	Medium	Yes	Local GP Services (existing and potential providers) Department of Health WA Country Health Service
	Advocate and facilitate improved accessibility of shop entrances.	High	Yes	Private developers Existing and new business owners

Outdoor Spaces and Buildings				
Objective	Actions	Priority	Within existing resources?	Others involved
Create outdoor spaces and buildings that promote mobility, independence and quality of life for older people.	Continue to undertake well planned maintenance of Council infrastructure (infrastructure, roads and footpaths) that contributes to safe access for all.	Low	Yes	Private developers Government Agencies and Funders
	Investigate opportunities to increase access to the hydrotherapy pool.	Low	Yes	

Transport and Movement				
Objective	Actions	Priority	Within existing resources?	Others involved
Ensure seniors have access to safe and consistent transport options.	Continue to improve the provision of footpaths across the Shire.	Medium	Yes	Business owners
	Continue to investigate and advocate on regional transport issues that impact on the ability of people to age in place.	Medium	Yes	Wheatbelt Development Commission Neighbouring Local Government Authorities Department of Transport Department of Health WA Country Health Service

Housing				
Objective	Actions	Priority	Within existing resources?	Others involved
Investigate and advocate for accessible, affordable and diverse housing options that contribute to the ability of people to stay in their community.	Continue to advocate for the increased provision of residential aged care accommodation across the Shire.	High	Yes	State Government Federal Government Private Developers CEACA
	Seek opportunities to facilitate the availability of more rental accommodation in the Shire.	High	Yes	State Government Federal Government Private Developers CEACA

Sport and Recreation				
Objective	Actions	Priority	Within existing resources?	Others involved
Provide facilities and recreation services that contribute to the social and physical wellbeing of older community members.	Support initiatives that increase the participation of seniors in sport and recreation activities.	Medium	No	Sport clubs Community groups

Social Participation/ Respect and Social Inclusion				
Objective	Actions	Priority	Within existing resources?	Others involved
Facilitate opportunities for community members to engage with each other and ensure respect for our older community members is encouraged.	Facilitate opportunities for stronger partnerships between seniors and the school.	Medium	No	Bruce Rock District High School
	Continue to promote volunteering activities and events to new residents.	High	No	Bruce Rock Community Resource Centre

Communication and Information				
Objective	Actions	Priority	Within existing resources?	Others involved
Ensure high quality, reliable and up to date information is made available to older people in the community.	Seek opportunities to improve all aspects of Shire communication.	Medium	Yes	
	Ensure older people (both residents and tourists) have access to necessary Shire information in suitable formats.	High	Yes	
	Facilitate communication between other agencies and service providers that contribute to an Age Friendly Community.	Medium	Yes	Service Providers State Government

IMPLEMENTATION AND MONITORING

Implementation of this plan will occur through ongoing corporate planning. Resourcing of any new or expanded initiatives will need to be considered through the due process of the Shire's Integrated Planning and Reporting.

This Age Friendly Community Plan reflects the Shire's strong commitment to optimising opportunities for health, participation and security for ageing community members. This commitment is aligned to the Western Australia State Government an Age Friendly WA: The Seniors Strategic Planning Framework. The Shire is not the only agency with responsibility for ensuring an age friendly community and the exact contribution it makes is difficult to measure. A large number of other factors influence how the ageing population experience community life across the eight domains of an Age Friendly Community. However, the Shire will monitor a set of key indicators as outlined below to track the progress of the sector in terms of the overall goal of the Plan.

Indicators
Health and Community Services
<ul style="list-style-type: none"> ▪ Community satisfaction with availability and access to health and medical services ▪ Improved access to shops
Outdoor Spaces and Buildings
<ul style="list-style-type: none"> ▪ Community satisfaction with Shire owned buildings ▪ Community satisfaction with access to the hydrotherapy pool
Transport and Movement
<ul style="list-style-type: none"> ▪ Community satisfaction with footpaths and roads
Housing
<ul style="list-style-type: none"> ▪ Increase in the aged housing available
Sport and Recreation
<ul style="list-style-type: none"> ▪ Seniors satisfaction with the provision of sport and recreation activities
Social Participation/Respect and Social Inclusion
<ul style="list-style-type: none"> ▪ Increased youth participation in volunteering ▪ New residents awareness of events and volunteering activities
Communication and Information
<ul style="list-style-type: none"> ▪ Community satisfaction with the provision of Shire information

ANNEX 1: AGE FRIENDLY COMMUNITY AUDIT REPORT

ANNEX 2: ENGAGEMENT REPORT:TOWARDS AN AGE FRIENDLY COMMUNITY PLAN



ENGAGEMENT REPORT

Dec 2015

Towards an Age Friendly Community Plan



CONTENTS

Key Findings	21
Introduction	22
Background	22
Community Engagement Methodology	23
Purpose	24
Focus Group Respondents	25
Service Providers	25
Seniors	25
Survey Respondents	29
Focus Group Results – Service Providers	31
Health and Community Services	31
Outdoor Spaces and Buildings	31
Transport and Movement	31
Housing	31
Respect and Social Inclusion	31
Focus Group Results – Seniors	32
Health and Community Services	32
Outdoor Spaces and Buildings	32
Transport and Movement	32
Housing	32
Sport and Recreation	32
Social Participation	32
Respect and Social Inclusion	33
Communication and Information	33
Priorities	33
Survey Results	34
Health and Community Services	34
Outdoor Spaces and Buildings	34
Transport and Movement	35
Housing	36
Sport and Recreation	37
Social Participation	38

Respect and Social Inclusion	38
Communication and Information	39
Priorities	40
General Comments	40
Next Steps	41
Annex 1: Focus Group Promotional Flyer	42
Annex 2: Survey Promotional Flyer	43
Annex 3: Community Survey	44
Annex 4: Participant Information Forms	51

KEY FINDINGS

It is clear from the results of the engagement activities that both survey respondents and focus group participants enjoy living in the Shire of Bruce Rock. However, the research also shows that the community feel that there are some opportunities for improvement regarding the provision of key services in order to create an age friendly community.

The key findings are:

- A total of 17 individuals participated in the seniors' focus group and 34 individuals participated in the surveys. A focus group for service providers was held in partnership with the Shire of Merredin and a total of 15 people participated.
- Of those seniors who participated, 82% of survey respondents and 65% of focus group participants are retired.
- The majority of both survey and focus group respondents believe that improved provision of health and community services and attention to road safety will lead to a more fulfilling experience for seniors in the Shire of Bruce Rock.
- Focus group participants believe the most important issues for aged persons in the Shire of Bruce Rock are:
 - Public transport
 - Safety of all who access roads
 - Increased access to medical specialists
 - Increased number of volunteers
 - Gopher users more aware of speed limits
 - Road maintenance
 - Senior housing
- Survey respondents believe the most important issues for aged persons in the Shire of Bruce Rock are:
 - Health services and care, accessibility to a doctor
 - Accommodation for the very elderly
 - Transport to Perth
 - Road safety due to increased rate of trucks on the road

INTRODUCTION

Background

Age-friendly communities are those that encourage “active aging by optimizing opportunities for health, participation and security in order to enhance the quality of life as people age” (World Health Org). An Age Friendly Community is one which:

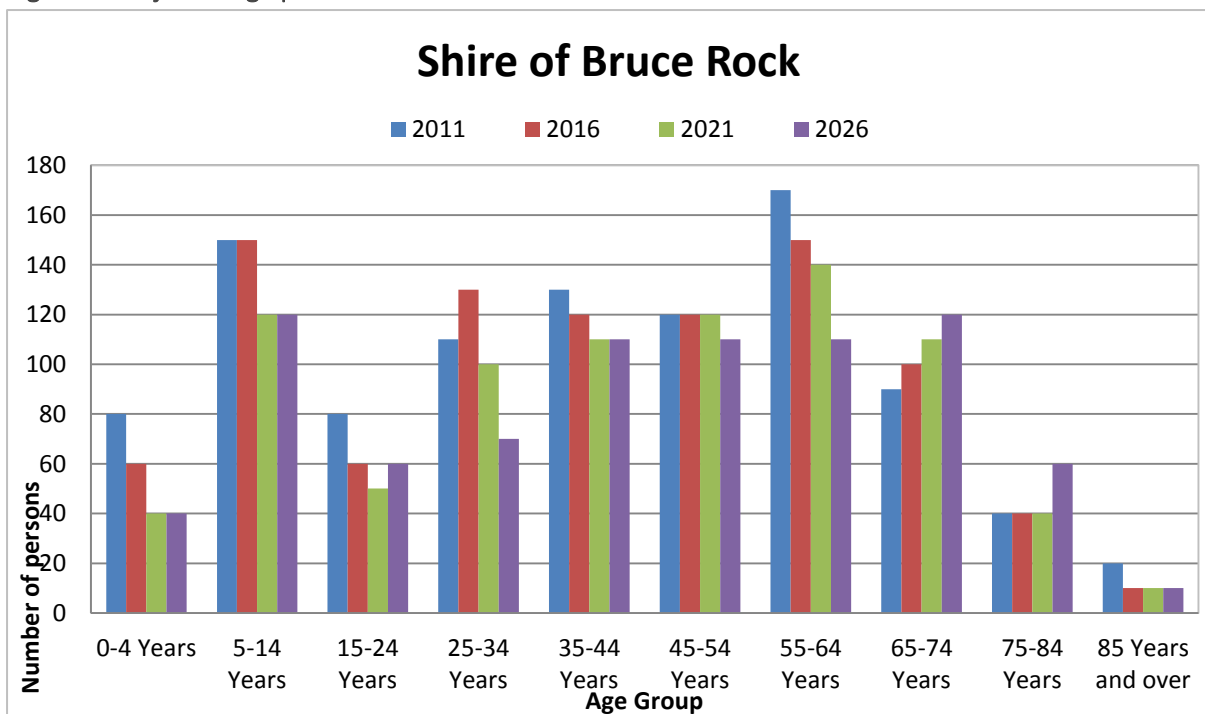
- recognises the great diversity among older people;
- promotes their inclusion and contribution in all areas of community life;
- respects their decisions and lifestyle choices; and
- anticipates and responds to ageing-related needs and preference.

The Shire of Bruce Rock considers age-friendly community planning vital to undertake for the following reasons:

- By 2027, Wheatbelt population over 70 will have increased by 75.3%
- The proportion of people 70+ will have increased from 10.4% in 2011 to 17% in 2027
- The increase projected for Bruce Rock is: 72.3% to 193 people in 2027.

In addition to this, older adults generally prefer to remain in their own home and continue to be part of their community. Older adults feel safe, valued and respected in their own community and local governments have a key role in ensuring this can occur.

Figure 1: Projected age profiles for the Shire of Bruce Rock from 2011 to 2026



<http://www.planning.wa.gov.au/publications/6196.asp>

Age-friendly community planning is also a state and regional issue. In 2012 the State Government adopted “An Age-friendly WA: The Seniors Strategic Planning Framework 2012-17.” The following actions have also been undertaken:

- 2013 the Wheatbelt Integrated Aged Care Plan was published
- 2014 the Wheatbelt Development Commission (WDC) published a guide for Age-Friendly Community Planning
- 2015 WDC provided a small value grants program for minor improvement works targeted at improving age-friendliness (the Shire of Bruce Rock was successful in getting funding for two improvement projects)
- 2015 Department of Local Government and Communities Grant program to prepare plans (Bruce Rock again successful).

Community Engagement Methodology

The broad approach adopted by the Shire of Bruce Rock in preparing an Age Friendly Community Plan consists of a four step solution-focused process to produce a strategy that will be consistent with and complementary to the Strategic Community Plan:

Figure 2: Age friendly planning community process



The third step of the process concerns engagement. As part of the Age Friendly Planning process, and to obtain the knowledge and views of seniors and those who care for them, a Community Reference Group has been established. This group guides and supports the project, liaises with the Department of Local Government and Communities, reviews draft reports and will endorse the final plan. In addition to this, the group has provided input into the design of a community survey and focus groups. Both the survey and the focus group sessions were structured around the eight WHO domains with participants involved in assessing these features in their own communities.

The Shire of Bruce Rock conducted two focus groups. The first focus group involved community members in the Shire of Bruce Rock and the second was for service providers, which was held in partnership with the Shire of Merredin. The Shire advertised the focus groups and Community Survey (available in hard copy and online) using the following channels:

- The Rock Review (weekly newsletter)
- Shire of Bruce Rock Website
- Mail out to all post boxes in the Shire

See Annex 1 for a copy of the Focus Group Promotional Flyer. Annex 2 contains a copy of the Survey Promotional Flyer. A full copy of the Community Survey is contained in Annex 3.

Purpose

The purpose of the Engagement Report is to present the results of the focus groups and Community Survey. It will be used to inform and guide the next steps in the development of the Shires' Age Friendly Community Plan.

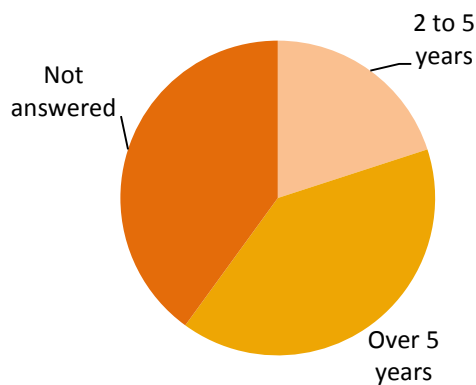
FOCUS GROUP RESPONDENTS

The Shire of Bruce Rock conducted two focus groups as part of the development of the Age Friendly Community Plan - one targeted at seniors and carers and a second targeted at service providers, which was held in partnership with the Shire of Merredin. The focus groups were designed and conducted in line with the Department for Communities Age Friendly Toolkit and the Wheatbelt Development Commissions Age Friendly Community Plan Guide. See Annex 4 for a copy of the Participant Information Form used to collect the data presented below.

Service Providers

A total of 15 service providers attended the focus group representing the voluntary (not for profit), public and private sector. 80% of respondents are female and 20% are male. 40% of the participants at the focus group have been employed with the Service Provider for over five years, 20% have been employed for two to five years and 40% did not answer the question (refer to Figure 3).

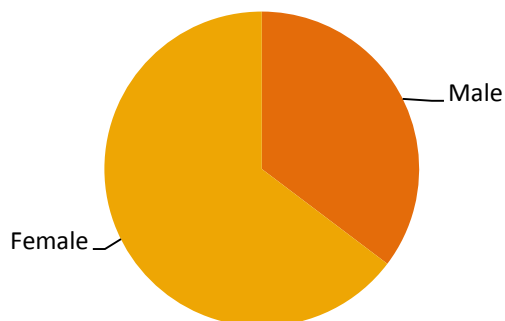
Figure 3: Service provider employment length



Seniors

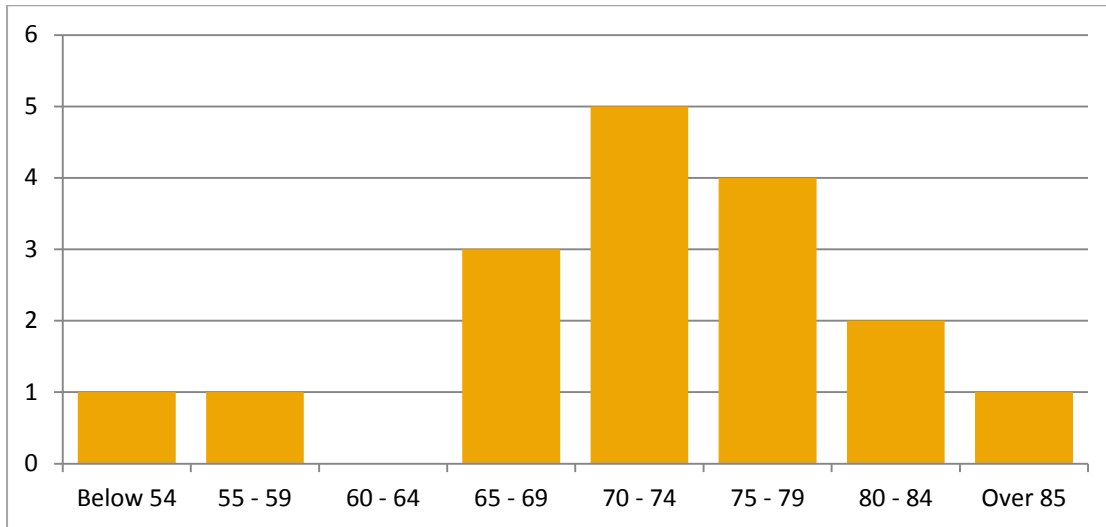
17 people attended the community focus group in the Shire of Bruce Rock. Of participants in attendance, 65% are female and 35% are male (refer to Figure 4).

Figure 4: Focus group respondent sex



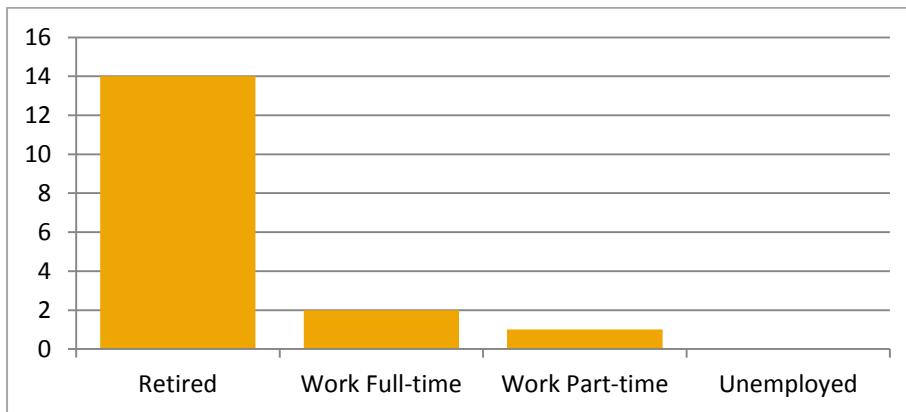
Respondents range from below 54 to over 85 years of age. The largest proportion of participants range from between 65 to 79 years of age (refer to Figure 5).

Figure 5: Focus group respondent age



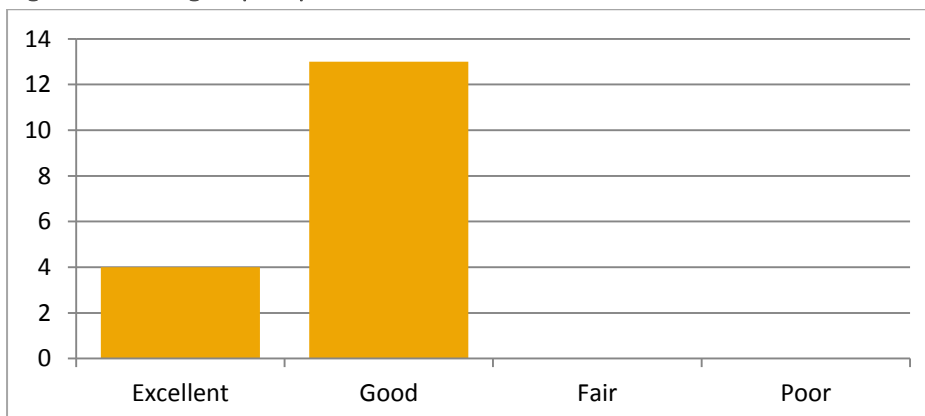
82% of respondents are retired and 18% work either full or part time. No participants have cited they are unemployed.

Figure 6: Focus group respondent present employment status



While 76% of participants indicated their current health is good, 24% indicated their health is excellent. No one has represented their health as fair or poor.

Figure 7: Focus group respondent current health



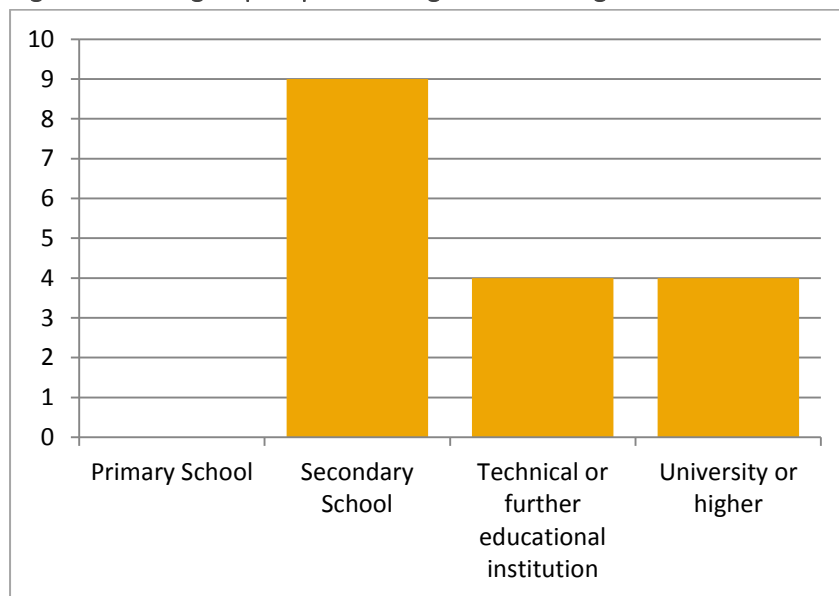
76% of participants indicated that they do not currently have health problems that limit their ability to perform normal daily activities. Conversely, 24% have indicated they do have limiting health problems.

Table 1: Focus group respondent limiting health problems

Answer Options	Response Count	Response Percent
Yes	4	24%
No	13	76%
Total	17	100%

Nine respondents have completed secondary school, four have completed technical or further education and four have completed university or higher.

Figure 8: Focus group respondent highest schooling level



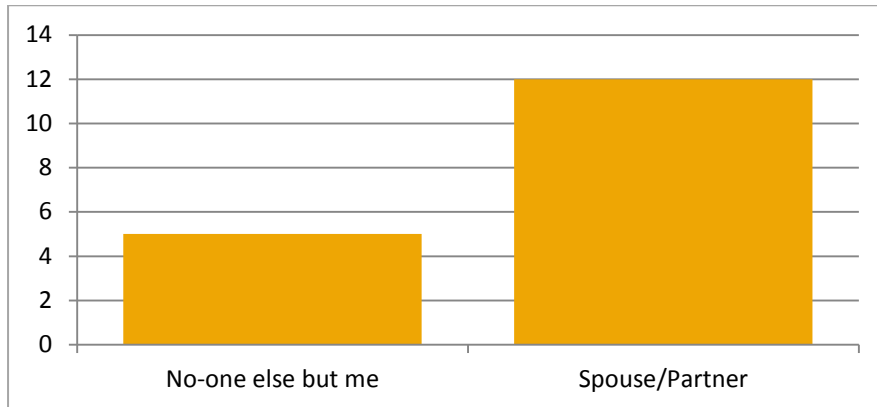
63% of respondents are home owners and 35% are renters.

Table 2: Focus group respondent home ownership

Answer Options	Response Count	Response Percent
Home Owner	11	65%
Renter	6	35%
Total	17	100%

29% of respondents live alone and 71% live with their spouse or partner.

Figure 9: Focus group respondent living arrangements

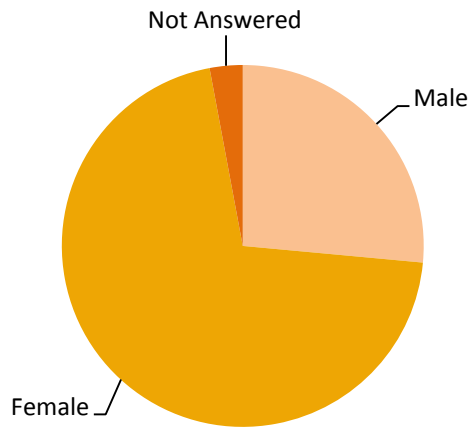


All participants live in Bruce Rock.

SURVEY RESPONDENTS

34 respondents in the Shire of Bruce Rock filled out the provided survey. Approximately 71% of respondents are female, 26% are male and 3% did not answer (see Figure 10).

Figure 10: Survey respondent sex



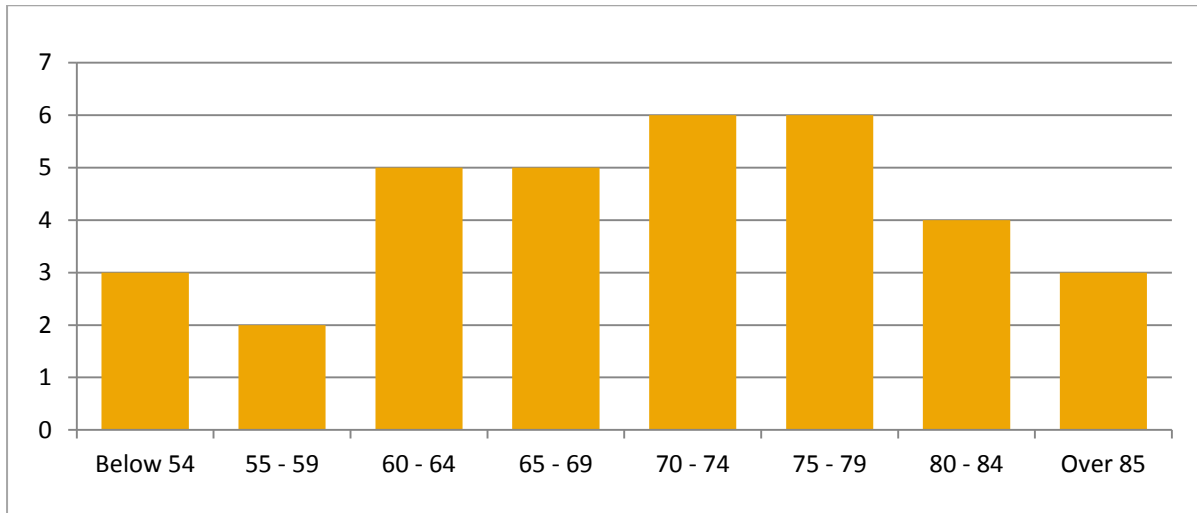
Respondents were also asked to answer the following question: “Which best describes yourself?” 97% of respondents identified as community members (refer to Table 3).

Table 3: Survey respondent self-identification

Answer Options	Response Count	Response Percent
Community member	33	97%
Service provider	0	0%
Carer	1	3%
Other (please specify)	0	0%
Total	8	100%

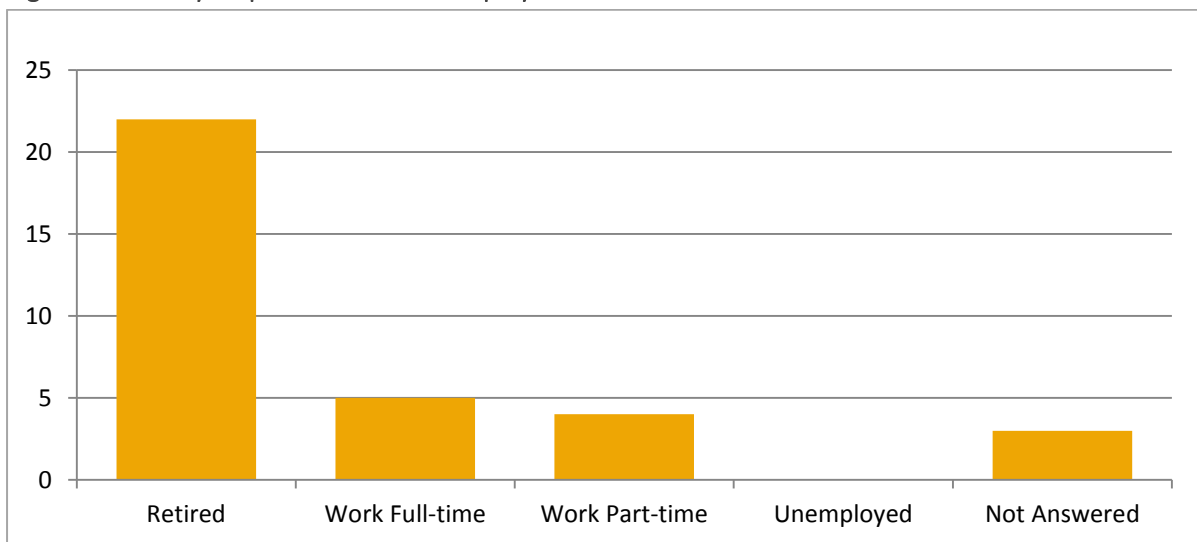
Survey respondents range from below 54 to over 85 years of age. The majority of respondents fall between ages 60 to 79 (refer to Figure 11).

Figure 11: Survey respondent age



65% of survey respondents indicated they are retired and 27% work either full or part time. 9% of respondents did not answer.

Figure 12: Survey respondent current employment status



FOCUS GROUP RESULTS – SERVICE PROVIDERS

Health and Community Services

Service provider focus group respondents indicated that the current level of health and community care is not adequate for the increasingly ageing population of the Shire of Bruce Rock and the Shire of Merredin. Suggestions for improvements in the current system are noted below:

- Priority one state register
- Home medication reviews
- Chronic disease self-management.

Service providers also noted the changes in service packages and funding for chosen services.

Outdoor Spaces and Buildings

Comments regarding outdoor spaces and buildings ranged from keeping gophers off of the roads and onto properly maintained footpaths, to providing proper lighting so as to increase the safety and comfort of older people who currently do not like going out at night. Respondents also noted the need for exercise stations in parks and community areas like the Recreation Centre, Roy Little Park and Upper French Park. Improvements to public buildings are noted in the following:

- Greater provision of disabled toilets
- Greater provision of automatic doors
- Increased provision of pedestrian crossings.

Transport and Movement

Respondents noted the possibility of a local-only senior's bus for shopping, excursions, appointments and other areas of social support. It was also suggested that a possible solution to the lack of transport options for residents is the improvement of services from Fiona Stanley hospital and the provision of Telehealth, specialist online video conferencing.

Housing

Respondents commented on greater provision of housing, noting an independent living 55+ facility as well as self-funding lifestyle housing. They also noted how low-care housing provision was currently in transit.

Respect and Social Inclusion

Service providers reported on several instances of respect and social inclusion of seniors in the Shire of Bruce Rock and the Shire of Merredin. They include the following:

- Home community care
- Partnerships between schools and seniors to revitalise intergenerational contact
- Events and programs that promote good experiences with young people
- Adoptive grandparents program.

FOCUS GROUP RESULTS – SENIORS

Health and Community Services

Focus group respondents indicate that they are very pleased with the current medical centre in the Shire of Bruce Rock. Respondents have indicated it would be good to have more beds available at the medical centre, and are pleased the Telehealth services are available. There is a desire, however, for the hospital to undergo planned improvements. While HACC offers transport services, there are limited volunteer drivers and no public transport, compelling individuals to rely on family and friends. The ambulance service is cited as being fantastic but participants are worried about volunteer “burn out.” Participants have noted that essential shopping, including delivery service, is available in the Shire.

Outdoor Spaces and Buildings

Seniors in the Shire of Bruce Rock have a dedicated building and HACC. There is also a hydro pool available with a referral. Respondents are concerned, however, that shop access is currently limited for those using mobility aids. Participants are also concerned that private shop owners are not accessing improvement funding, evidenced in poor maintenance and presentation of shops. Respondents feel that there is currently a good provision of parks for the old and young alike and the entrance to the Shire is well maintained.

Transport and Movement

Respondents have noted there is a lack of public transport in the Shire of Bruce Rock. Public safety is also a recurrent concern in the following ways:

- Private cars that block driveways for gopher users
- Reinforced speed of travel for gopher users
- Desire for removing trucks from the roads

Respondents also note that main roads are the “biggest issue” but that maintenance of footpaths (especially for gophers) is also important.

Housing

Respondents note there are 19 Independent Livings Units and that CEACA is planning to construct more in central strategic locations. There is a strong demand for senior housing and while there is plenty of stock for sale, not many are available for rent. Respondents noted that high quality housing is limited.

Sport and Recreation

While respondents noted that opportunities for sport and recreation are wonderful, not enough seniors attend events and there appears to be limited interest.

Social Participation

Respondents are concerned with the possible “burn out” of volunteers but are pleased by the multitude of opportunities to become involved in social participation. They have also cited the desire

to engage new residents and promote the various volunteering activities and have mentioned Rotary as an organisation that might like to become more involved in the Shire.

Respect and Social Inclusion

There is a strong sense of community in the Shire of Bruce Rock and respondents feel welcome and proud of this. Respondents are also pleased there is no graffiti on the buildings and the town itself is very clean. One respondent noted that, “We don’t find the town, it finds us.” Participants feel very well respected by young people. They also feel there are opportunities for partnerships between seniors and schools to work together and foster multi-generational awareness.

Communication and Information

Participants noted that the Rock Review is the only place for information on events in the Shire but that this is inadequate because some people do not read it. Participants cited that community noticeboards provide information and that the CRC provide access to computers. Participants are interested to know more information about the NBN and when it will be provided to the Shire of Bruce Rock. They are also concerned with how information is provided to tourists.

Priorities

Focus group respondents have outlined the following priorities:

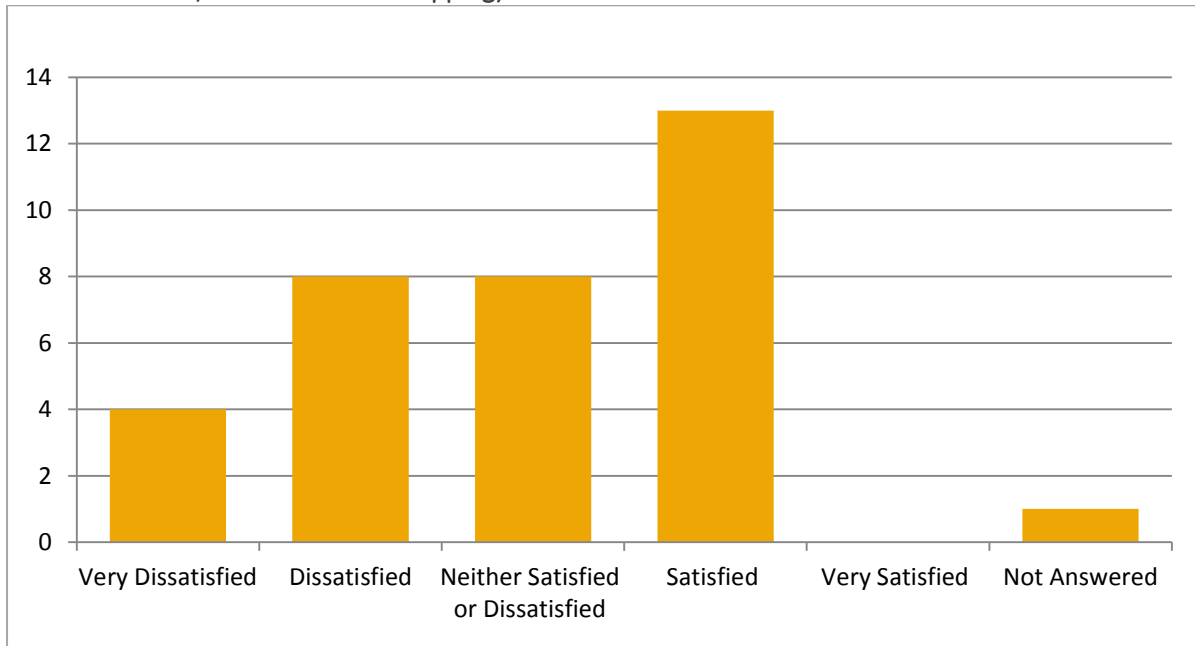
- Public transport
- Safety of all who access roads
- Increased access to medical specialists
- Increased number of volunteers
- Gopher users more aware of speed limits
- Road maintenance
- Senior housing.

SURVEY RESULTS

Health and Community Services

Approximately 36% of survey respondents indicated that they are either very dissatisfied or dissatisfied with the provision of health and community services in the Shire of Bruce Rock. 24% of respondents indicated they were neither satisfied nor dissatisfied with the Shire's provision of services and 38% indicated they were satisfied (see Figure 13). 3% did not answer.

Figure 13: How satisfied are you with the provision of Health and Community Services (including GP, medical services, home care and shopping) in the Shire of Bruce Rock?



Comments regarding health services were highly focused on the lack of a doctor on weekends as well as limited availability of doctors in the Shire. One respondent noted that this “puts extra pressure on our St John volunteers and results in elderly patients having to be transferred back and forth between hospitals, just because there is no doctor in town.” Several respondents also noted they “have no confidence in the GP.” One comment noted that it “would help if the doctor was not so technical and spoke to us...in layman’s terms.” Another individual wrote that the “hospital & other services [are] wonderful.”

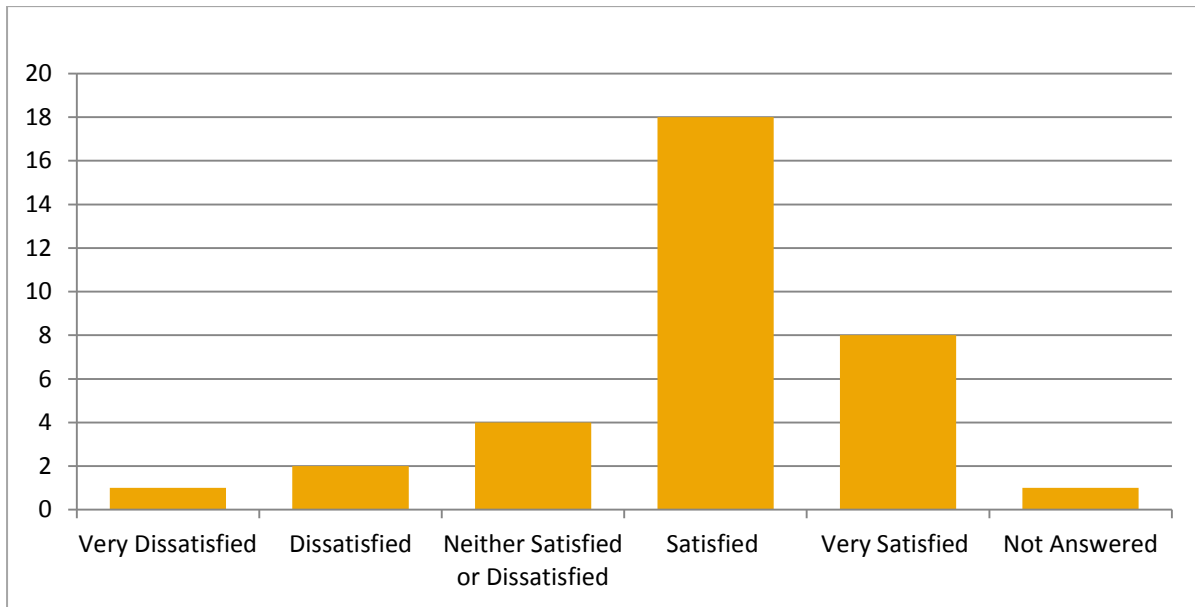
Respondents feel that “shop entrances could be more user friendly to the ageing population” and suggested that “all shop front doors [be] converted to automatic self-opening doors” in order to increase accessibility. It is also noted that the local shopping centre is good but “need better local support” to remain viable. One respondent commented that “we do have restricted shopping in town but we are only a small community.”

Outdoor Spaces and Buildings

77% of survey respondents have indicated that they are either very satisfied or satisfied with the Shire's provision of outdoor spaces and buildings. 9% of respondents are currently very dissatisfied or

satisfied. Approximately 12% or 4 respondents are neither satisfied nor dissatisfied with outdoor spaces and buildings and 3% have provided no answer at all (see Figure 14).

Figure 14: How satisfied are you with the provision of Outdoor Spaces and Buildings in the Shire of Bruce Rock?



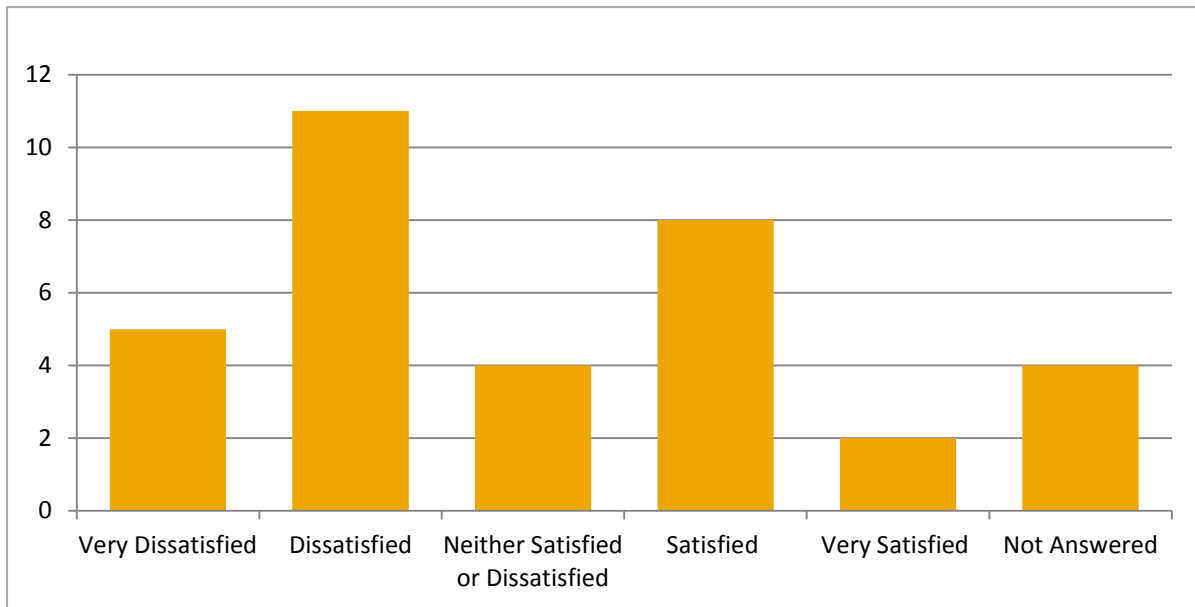
Concerns regarding outdoor spaces and buildings were generally focused around accessibility and the hydro pool. Respondents noted that buildings do not have wide enough doors to allow for accessible entry. One survey respondent noted that “there are only two shops in the main street that have adequate facilities like wide doorways for disabled and elderly people with walkers.” Another participant noted that “we need some pathways for walking and gophers have to share the road with car[s].” Another respondent commented that “outdoor spaces are under-utilised” and could be used to “cater for more events.” Several individuals commented regarding the lack of hydro-pools available hours. They noted that this “makes it very difficult for workers to use the facilities” for rehabilitation.

Other commentators are satisfied with the cleanliness of the town but have suggestions for improving several Shire offerings. One individual would like to see a “dog friendly park” and another suggested the “garden area at the amphitheatre could be greatly improved by turning it into a cool, green oasis where people could sit to eat lunch or socialize.”

Transport and Movement

47% of respondents answered they were either very dissatisfied or dissatisfied with transport and movement in the Shire (see Figure 15). 12% of respondents were neither satisfied nor dissatisfied and 30% were satisfied or very satisfied. 12% of respondents did not answer.

Figure 15: How satisfied are you with Transport and Movement (including roads, footpaths and public/community transport) in the Shire of Bruce Rock?



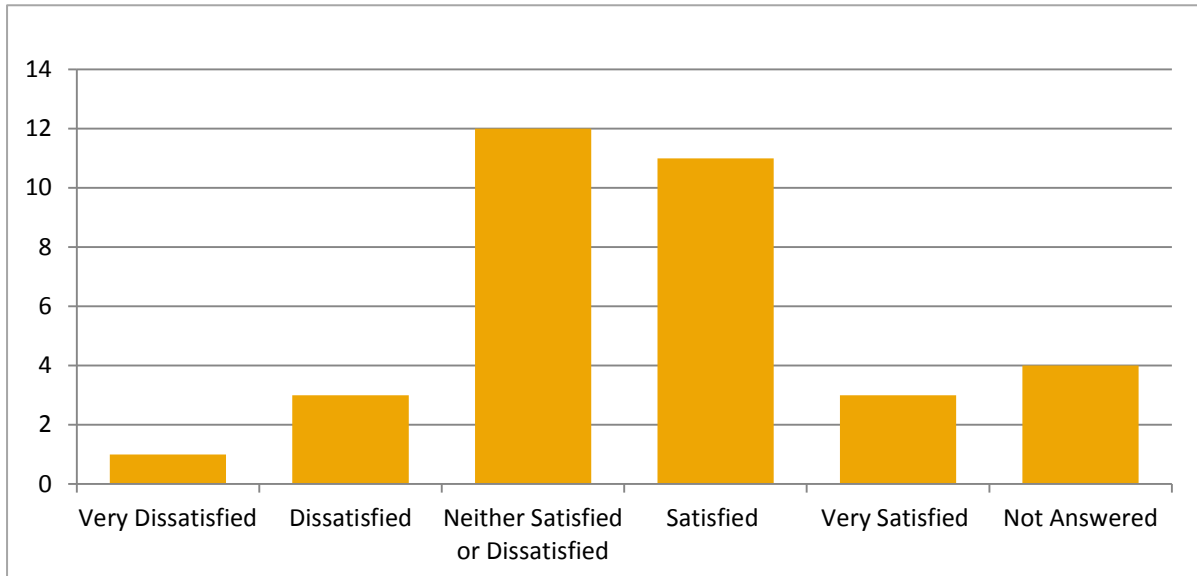
Respondents are generally concerned by the number of “trucks on the road.” They feel that excess grain trucks are contributing to dangerous road conditions and would like “the rail back.” In addition to this, one respondent noted the “Merredin-Bruce Rock road is poorly maintained and quite dangerous with the drop-offs at the edge of the bitumen.”

Several commentators have noticed, however, the “great improvements made to the main street for those who have mobility issues.” Another participant noted that “we need some pathways for walking and gophers have to share the road with car[s].” While some feel the “footpaths need redoing,” another individual wrote that footpath conditions are “slowly improving.” Respondents have written that “everyone needs access to public transport to Merredin and Perth.” In addition to this, an individual posited that without being able to drive a vehicle, they are “not able to leave town unless [they] enlist the service of someone else.”

Housing

35% of respondents noted they were neither satisfied nor dissatisfied with the provision of housing in the Shire, as indicated in Figure 15. While 12% were dissatisfied or very dissatisfied, 41% were either satisfied or very satisfied. 12% of respondents did not answer.

Figure 16: How satisfied are you with the provision of Housing in the Shire of Bruce Rock?

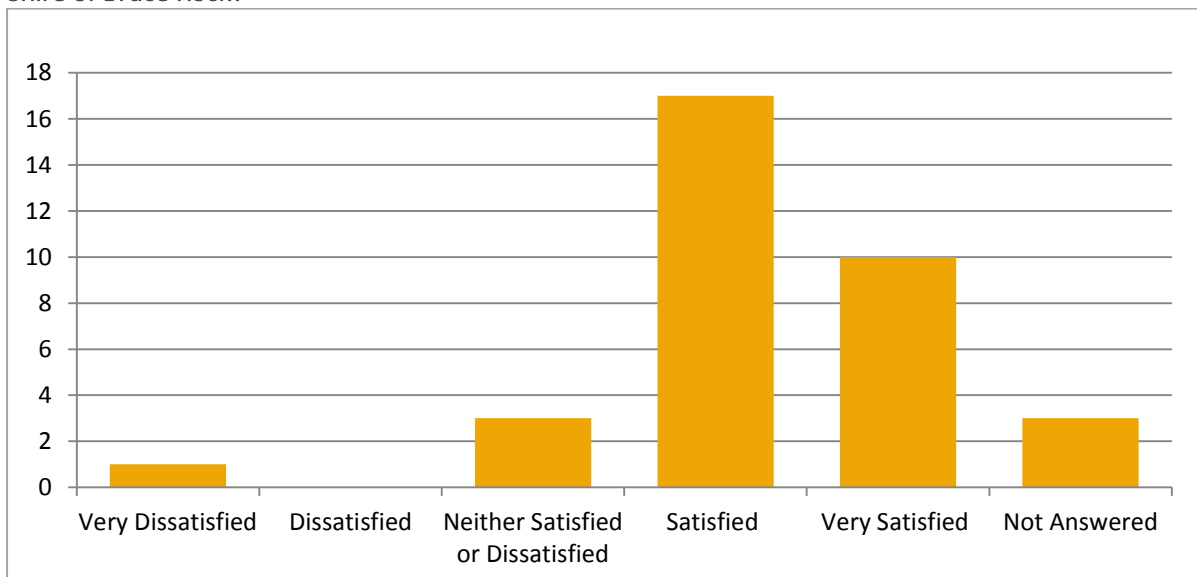


Respondents have noted that “more accommodation [is] needed for the very elderly” so they are not forced to leave the Shire. More rental units are also desired. One individual commented that “there is far, far more demand than supply for rental accommodation in, and adjacent to, town.” Another respondent commended the Shire and noted the “housing is of a very high standard.”

Sport and Recreation

79% of respondents are satisfied or very satisfied with the Shire’s provision of sport and recreation facilities, and only one person is very dissatisfied (refer to Figure 17). While 9% of respondents are neither satisfied nor dissatisfied, 9% of respondents did not answer.

Figure 17: How satisfied are you with the provision of Sport and Recreation facilities and services in the Shire of Bruce Rock?

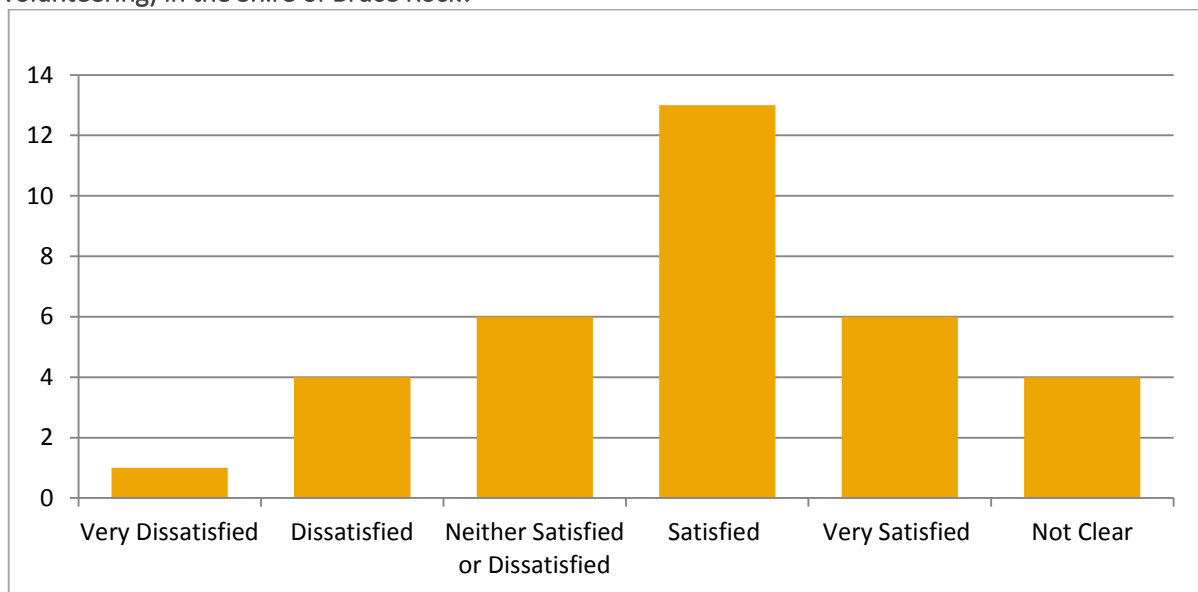


Respondents are generally pleased with the Shire’s provision of sport and recreation facilities. One individual commented the selection of services was “good.” Several other comments noted the desire for full pool access during the entire year.

Social Participation

Approximately 56% of respondents are satisfied or very satisfied with the social participation opportunities available in the Shire of Bruce Rock. Only 15% of respondents cited they were dissatisfied or very dissatisfied with provision of social participation opportunities, 18% were neither satisfied nor dissatisfied and 12% were not clear.

Figure 18: How satisfied are you with Social Participation opportunities (including events, activities and volunteering) in the Shire of Bruce Rock?

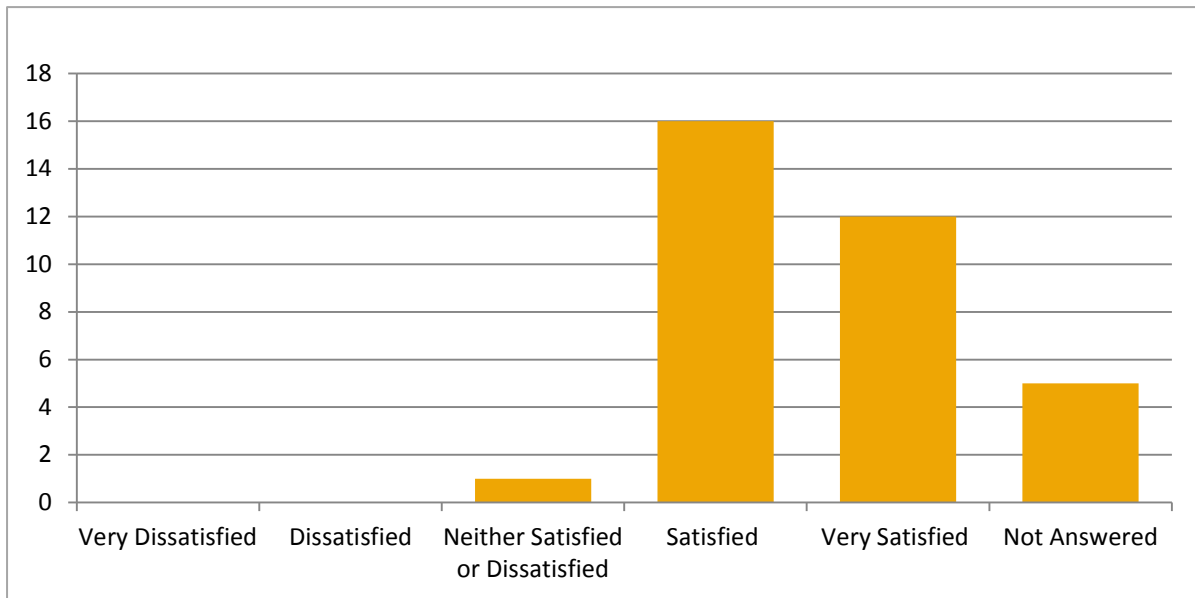


Comments regarding social participation opportunities are generally favourable but several individuals do have concerns. One individual noted there are “plenty of events held in Bruce Rock” but there is a lack of support provided by locals. In addition to this, another comment noted there needed to be more events held “for the very elderly such as day time entertainment and within the town.” Another respondent wrote that while “emergency services provide a great capability,” they “draw from a small, dedicated group of vollies” creating the “struggle for people power.” One comment noted there is “ample provision for social participation if folks get out and join organisations.”

Respect and Social Inclusion

47% of respondents indicated they are satisfied and 35% indicated they are very satisfied with the level of respect and social inclusion seniors experience in the Shire. 3% indicated they were neither satisfied nor dissatisfied and no one noted they were dissatisfied (see Figure 19). 15% of respondents did not answer.

Figure 19: How satisfied are you with the level of Respect and Social Inclusion seniors experience in the Shire of Bruce Rock community?

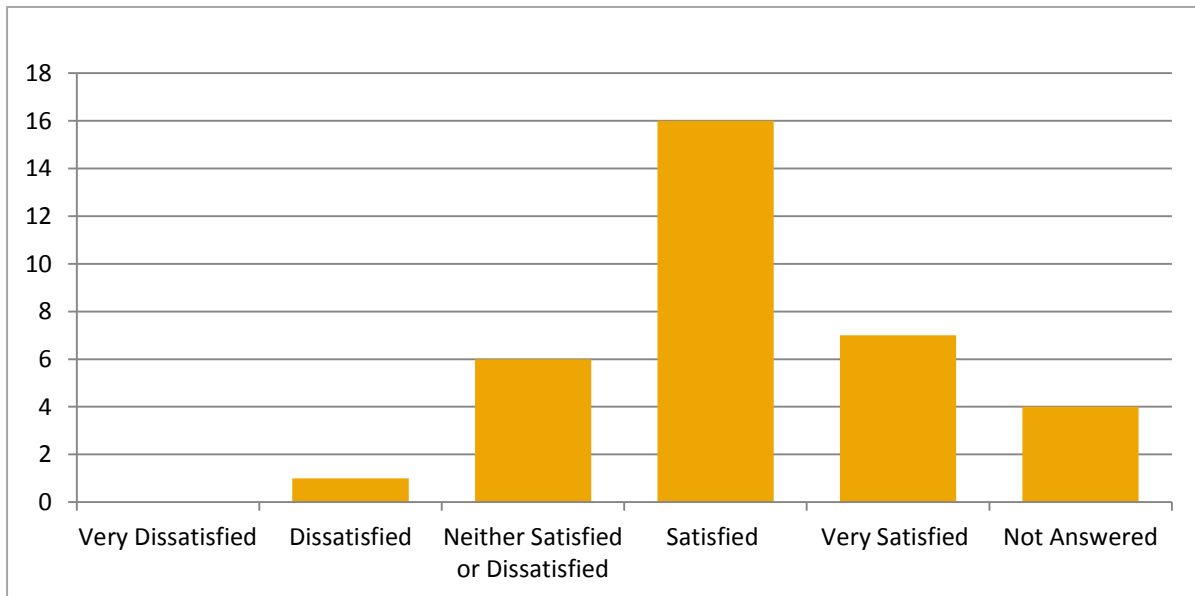


Commentators feel a “good level of respect from the younger generations” and that “Bruce Rock is the one place you can really feel happy and at home.” There is a general sense of satisfaction and community noticeable in the commentary. Another respondent noted “I enjoy my life in Bruce Rock and came to visit and stayed.” A comment also celebrated “the more senior friendly entrances to most of the businesses along the main street.”

Communication and Information

68% of respondents are satisfied or very satisfied with the communication and information about services and activities in the Shire of Bruce Rock. 3% of respondents indicated they are either very dissatisfied or dissatisfied and 18% are neither dissatisfied nor satisfied. 12% did not answer.

Figure 20: How satisfied are you with Communication and Information (about services and activities) in the Shire of Bruce Rock?



A respondent noted they felt “very well informed through the crc and the Rock Review,” but another noted “the Shire’s reliance on the Rock Review to communicate and inform is insufficient.” Another comment reads that “if you do not seek info in Shire web page you would not know anything the Shire may well be up to.” Other commentators responded favourably to the Rock Review’s role in information communication.

Priorities

Respondents were asked to comment on the following question: “In light of all of the previous questions, what would you say is the single most important issue for aged persons in your community?” Priorities for survey respondents include:

- Health services and care, accessibility to a doctor
- Accommodation for the very elderly
- Transport to Perth
- Road safety due to increased rate of trucks on the road.

General Comments

Respondents were also asked to comment on the following: “Do you have any other general comments that may assist the Shire of Bruce Rock in the preparation of the Age Friendly Community Plan?” One commentator noted that an “active senior precinct, would be good.” Another respondent replied that “the mature component of our community are content when they have a good health service, access to good shopping facilities, sporting options, and organizations that can interest and involve them.”

NEXT STEPS

The Engagement Report will inform the development of the Shire of Bruce Rock Age Friendly Community Plan. The development of the plan will involve:

- Ongoing liaison with and input from the Community Reference Group
- An “Issues and Options” Workshop with Council to identify:
 - possible quick wins
 - strategic fit and resource implications of larger scale improvements in light of the Integrated Planning and Reporting Suite
 - potential gains from targeted advocacy and partnerships
 - regional and sub-regional implications
- Preparation of a Draft Age Friendly Community Plan to be made available for public comment period
- Council adoption.

The process and output has been designed to dovetail into the Shire’s Integrated Planning and Reporting processes on an ongoing basis. It is intended to build the Shire’s capacity (and the capacity of our seniors) and embed seniors’ engagement and age friendly community considerations as a vital part of strategic and corporate planning.

ANNEX 1: FOCUS GROUP PROMOTIONAL FLYER



Age Friendly Community Plan (AFCP)

AFCP Focus Group Invitation

The Shire has been successful in obtaining funding from the Department of Local Government and Communities, to assist us to prepare an Age Friendly Community Plan that will identify the age-friendly features, barriers, and suggestions for improvement, against each of the following essential features of an age friendly community:

- Outdoor spaces and building
- Transport
- Housing
- Social participation
- Respect and social inclusion
- Civic participation and employment
- Communication and information
- Community support and health services.



Department of
**Local Government
and Communities**

Seniors' participation in the Shire's consultation process is essential to an age friendly approach to community planning. The Shire therefore seeks community input through the following focus group;

**Seniors and/ or Carers
Focus Group**
Wednesday 30th September 2015
10am - 1pm
Bruce Rock Shire Hall— Supper Room
Morning Tea & Light Lunch Provided

Register your Interest

Please contact Ashleigh Waight, Community Development Officer

Phone: (08)9061 1377

Email: cdo@brucerock.wa.gov.au



ANNEX 2: SURVEY PROMOTIONAL FLYER



Age Friendly Community Plan (AFCP)

Age Friendly Community Plan Seniors Survey

Hello,

The Shire of Bruce Rock is preparing an Age Friendly Community Plan that will identify age-friendly features, barriers, and suggestions for improvement. As part of developing the plan, we are currently undertaking a survey and would appreciate your input on the future needs of seniors living in the Shire of Bruce Rock.

The survey questions will cover eight areas of wellbeing and will take most people approximately 10 - 15 minutes to complete, depending on how much you have to say!

Your answers are completely confidential.

A hard copy of the survey can be collected from the Shire Office or can be accessed online at <https://www.surveymonkey.com/r/BruceRockAFC>

If you require further information about the survey please contact Ashleigh Waight, Community Development Officer on (08) 9061 1377 or cdo@brucerock.wa.gov.au

The survey will close at 5pm on Friday, 16 October 2015.



ANNEX 3: COMMUNITY SURVEY

Shire of Bruce Rock Age Friendly Community Plan Seniors Survey

The Shire of Bruce Rock is preparing an Age Friendly Community Plan that will identify age-friendly features, barriers, and suggestions for improvement. We would appreciate your input on the future needs of seniors living in the Shire of Bruce Rock.

Please select your age category:

- | | | |
|-----------------------------------|--------------------------------------|----------------------------------|
| <input type="checkbox"/> Below 54 | <input type="checkbox"/> 55 - 59 | <input type="checkbox"/> 60 - 64 |
| <input type="checkbox"/> 65 - 69 | <input type="checkbox"/> 70 - 74 | <input type="checkbox"/> 75 - 79 |
| <input type="checkbox"/> 80 - 84 | <input type="checkbox"/> 85 and over | |

Sex: Male Female

Present employment status:

- Retired Work Full-time Work Part-time Unemployed

1. Health and Community Services

How satisfied are you with the provision of Health and Community Services (including GP, medical services, home care and shopping) in the Shire of Bruce Rock?

- 1 – Very Dissatisfied
- 2 – Dissatisfied
- 3 – Neither Satisfied or Dissatisfied
- 4 – Satisfied
- 5 – Very Satisfied

Comments about Health and Community Services (including GP, medical services, home care and shopping) in the Shire of Bruce Rock:

2. Outdoor Spaces and Buildings

How satisfied are you with the provision of Outdoor Spaces and Buildings in the Shire of Bruce Rock?

- 1 – Very Dissatisfied
- 2 – Dissatisfied
- 3 – Neither Satisfied or Dissatisfied
- 4 – Satisfied
- 5 – Very Satisfied

Comments about Outdoor Spaces and Buildings in the Shire of Bruce Rock:

3. Transport and Movement

How satisfied are you with Transport and Movement (including roads, footpaths and public/community transport) in the Shire of Bruce Rock?

- 1 – Very Dissatisfied
- 2 – Dissatisfied
- 3 – Neither Satisfied or Dissatisfied
- 4 – Satisfied
- 5 – Very Satisfied

Comments about Transport and Movement (including roads, footpaths and public/community transport) in the Shire of Bruce Rock:

4. Housing

How satisfied are you with the provision of Housing in the Shire of Bruce Rock?

- 1 – Very Dissatisfied
- 2 – Dissatisfied
- 3 – Neither Satisfied or Dissatisfied
- 4 – Satisfied
- 5 – Very Satisfied

Comments about Housing in the Shire of Bruce Rock:

5. Sport and Recreation

How satisfied are you with the provision of Sport and Recreation facilities and services in the Shire of Bruce Rock?

- 1 – Very Dissatisfied
- 2 – Dissatisfied
- 3 – Neither Satisfied or Dissatisfied
- 4 – Satisfied
- 5 – Very Satisfied

Comments about Sport and Recreation facilities and services in the Shire of Bruce Rock:

6. Social Participation

How satisfied are you with Social Participation opportunities (including events, activities and volunteering) in the Shire of Bruce Rock?

- 1 – Very Dissatisfied
- 2 – Dissatisfied
- 3 – Neither Satisfied or Dissatisfied
- 4 – Satisfied
- 5 – Very Satisfied

Comments about Social Participation opportunities (including events, activities and volunteering) in the Shire of Bruce Rock:

7. Respect and Social Inclusion

How satisfied are you with the level of Respect and Social Inclusion seniors experience in the Shire of Bruce Rock community?

- 1 – Very Dissatisfied
- 2 – Dissatisfied
- 3 – Neither Satisfied or Dissatisfied
- 4 – Satisfied
- 5 – Very Satisfied

Comments about Respect and Social Inclusion in the Shire of Bruce Rock:

8. Communication and Information

How satisfied are you with Communication and Information (about services and activities) in the Shire of Bruce Rock?

- 1 – Very Dissatisfied
- 2 – Dissatisfied
- 3 – Neither Satisfied or Dissatisfied
- 4 – Satisfied
- 5 – Very Satisfied

Comments about Communication and Information in the Shire of Bruce Rock:

In light of all of the previous questions, what would you say is the single most important issue for aged persons in your community?

Do you have any other general comments that may assist the Shire of Bruce Rock in the preparation of the Age Friendly Community Plan?

Thank you for taking the time to fill in this survey, the information collected will guide the Shire of Bruce Rock in identifying the age-friendly features, barriers, and suggestions for improvement.

ANNEX 4: PARTICIPANT INFORMATION FORMS

**Age Friendly Communities
Participant Information Form****Older People**

Name: _____ Phone: _____

Address: _____ Postcode: _____

Please complete this Information Sheet by ticking the appropriate box or writing in your answer. We need this information so we can describe the characteristics of the people who took part in this age friendly planning consultation.

1. Age at last birthday: _____

2. Sex: Male Female

3. Present employment status:

 Retired Work Full-time Work Part-time Unemployed

4. Present occupation or last major occupation: _____

5. How would you describe your current health?

 Excellent Good Fair Poor

6. Do you have any health problem that limits your ability to do your normal daily activities?

 Yes No

7. What is the highest level of schooling you completed?

 Primary School Secondary School Technical or further educational institution (e.g. TAFE) University or higher

8. Do you rent, or own the home where you live?

 Renter Home owner

9. Who lives in your home with you? (Tick all that apply)

- No-one else but me Other relatives (Number _____)
- Spouse/partner Non-relatives (Number _____)
- Children (Number _____)

10. What suburb do you live in? _____

Please return this form to a Shire representative before the end of the focus group.

Age Friendly Communities

Participant Information Form

Carers of Older People

Name: _____ Phone: _____

Address: _____ Postcode: _____

Please complete this Information Sheet by ticking the appropriate box or writing in your answer. We need this information so we can describe the characteristics of the people who took part in this age friendly planning consultation.

1. Sex: Male Female

2. Present employment status:

Retired Work Full-time Work Part-time Unemployed (looking for work)

3. Present occupation or last major occupation: _____

4. What is the highest level of schooling you completed?

Primary School Secondary School Technical or further educational institution (e.g. TAFE) University or higher

5. Are you currently providing support or care to an older person(s) who (check all that apply):

Is physically disabled Is visually impaired

Has difficulty moving or walking Has dementia

Is hearing impaired

6. What is your relationship to the older person(s) you care for?

Parent/Parent in-law Other relative Non-relative

7. Does the person(s) you care for live in your home?

Yes

No

8. In which suburb does the older person you care for live? _____

Please return this form to a Shire representative before the end of the focus group.

Age Friendly Communities

Participant Information Form

Service Providers

Name: _____ Phone: _____

Address: _____ Postcode: _____

Please complete this Information Sheet by ticking the appropriate box or writing in your answer. We need this information so we can describe the characteristics of the people who took part in this age friendly planning consultation.

1. Sex: Male Female

2. Present occupation: _____

3. In what sector of the community are you employed?

Public sector (e.g. local government)

Private sector

Voluntary sector (non-profit)

4. How long have you been employed in this occupation in the local community?

Less than 2 years

2 to 5 years

Over 5 years

5. How much experience do you have with older people in your work?

A lot

A moderate amount

A little

None

Please return this form to a Shire representative before the end of the focus group.